



Gas control technology

CORAL
AUTOMOTIVE TECHNOLOGIES



Gas control technology



MECHANICAL REWINDING REELS

Stationary mechanical rewinding reels

- APT- APVT.....pag.4/5
- APTC/C – APVTC..... pag.4/5
- AM – AMA..... pag. 6/7
- AM MAXI – AMA MAXI..... pag. 6/7



POWER-DRIVEN REWINDING REELS

Stationary power-driven rewinding reels

- AE/AER..... pag. 8/9
- AE/AER MAXI..... pag. 8/9
- AEV/AERV..... pag. 8/9
- AEV/AERV MAXI..... pag. 8/9



FLEXIBLE HOSE

Flexible hose gas extraction

- T-GAS..... pag. 10/11
- PAV..... pag. 10/11
- T-SPECIAL..... pag. 10/11
- SNODOFLEX..... pag. 10/11
- ALLUFLEX..... pag. 10/11



NOZZLES

Nozzles gas extraction

- BN – BNT..... pag. 12
- BNA - BNPG – BNPM..... pag. 12/13
- BS – BSR..... pag. 13
- BIPG – BNPI..... pag. 14/15



TOTAL SYSTEM

Total sliding and stationary system

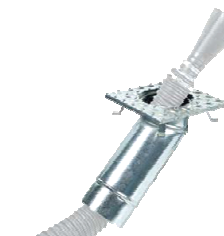
- ETA ONE – ETA TWO pag. 16
- POWER TWO pag. 17
- COVER 6 GAS..... pag. 17
- TTS-AK..... pag. 18/19
- SYSTEM LINE..... pag. 20/21



EXHAUSTERS ELECTRIC

Steel plate electric exhauster

- LAM..... pag. 22
- ASP..... pag. 23



FLOOR TRAPS

Floor traps under the floor

- POZ..... pag. 24
- FL..... pag.25



MODULAR TRACK

Modular track in extruded aluminium

- ETB – ETM – ETL..... pag. 26
- SLIDING CARRIAGES pag. 27
- SLIDING REELS pag. 27

*We make easier Your **WORLD**
We make it more efficient, more profitable and easy easy.*



Mod. APT

HOSE REEL WITH MECHANICAL REWIND:

SPRING DRIVER HOSE REEL FOR GAS EXTRACTION FROM SMALL CARS AND MOTORCYCLES.
ADAPTED FOR WALL OR CEILING INSTALLATION.

Simple, lightweight but reliable, thanks to the high quality of the materials used. The APT model is equipped with a locking mechanism to stop the hose at the desired height. It can be fitted on either the wall or the ceiling. Thanks to its compact size, is ideal for use with cars and motorcycles. Suitable for centralized extraction system. Complete with flexible hose mod. T-GAS, adjustable safety stop ATS, nozzle BNT, hose-clamp and with rubber covers. On request, could be supplied with automatic exhauster starting device (SYSTEM-GO, SWB C1 or C2).



Mod. APTC

HOSE REEL WITH MECHANICAL REWIND:

SPRING DRIVER HOSE REEL FOR GAS EXTRACTION OF MEDIUM AND HIGH POWERED CARS.
ADAPTED FOR WALL OR CEILING INSTALLATION.

Lightweight but extremely sturdy, thanks to the high quality of the materials used. It is equipped with a locking mechanism to stop the hose at the desired height. It can be fitted on either the wall or the ceiling. Complete with flexible hose mod. T-GAS, adjustable safety stop ATS, nozzle BNT, hose-clamp and with rubber covers. Suitable for centralized extraction system. On request, could be supplied with automatic exhauster starting device (SYSTEM-GO, SWB C1 or C2).

Mod. APVT

HOSE REEL WITH MECHANICAL REWIND:

SPRING DRIVER HOSE REEL WITH FAN SUITABLE FOR GAS EXTRACTION OF CARS AND MOTORCYCLES.
ADAPTED FOR WALL OR CEILING INSTALLATION.

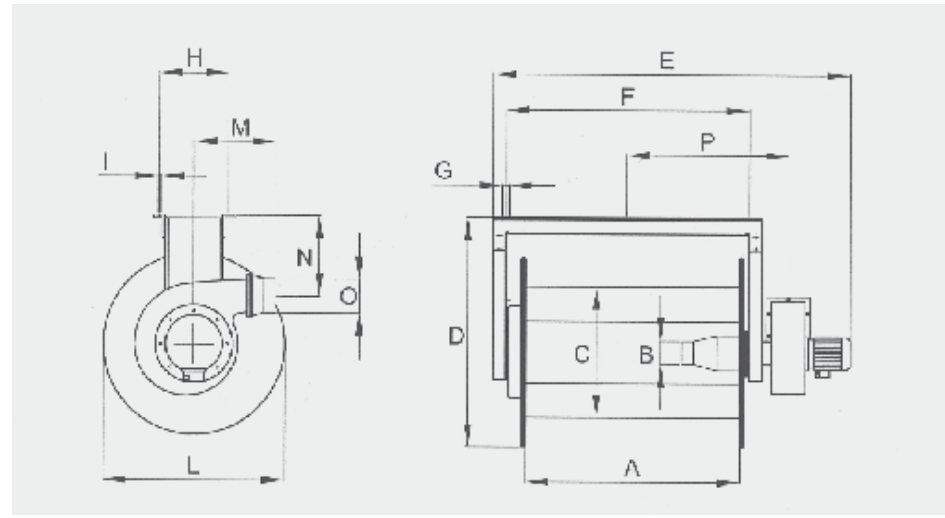
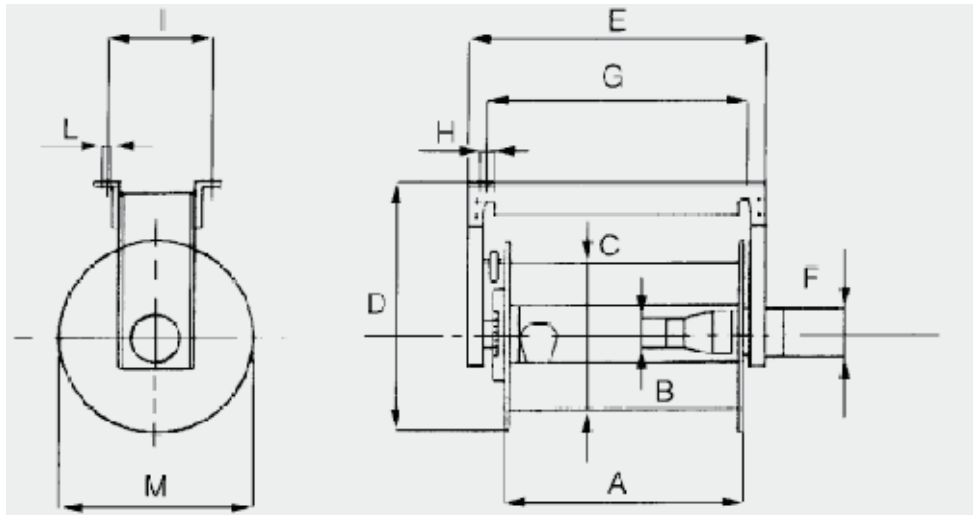
Differs from "APT" model in the coupling with an "LAM" series electric exhauster. It provides excellent extraction even with a flexible hose up to 10 metres long. Thanks to its compact size, is ideal for use with cars and motorcycles workshops where autonomous workstations are needed. Complete with flexible hose mod. T-GAS, adjustable safety stop ATS, nozzle BNT, hose-clamp and with rubber covers. On request, could be supplied with automatic exhauster starting device (SYSTEM-CTRL).

Mod. APVTC

HOSE REEL WITH MECHANICAL REWIND :

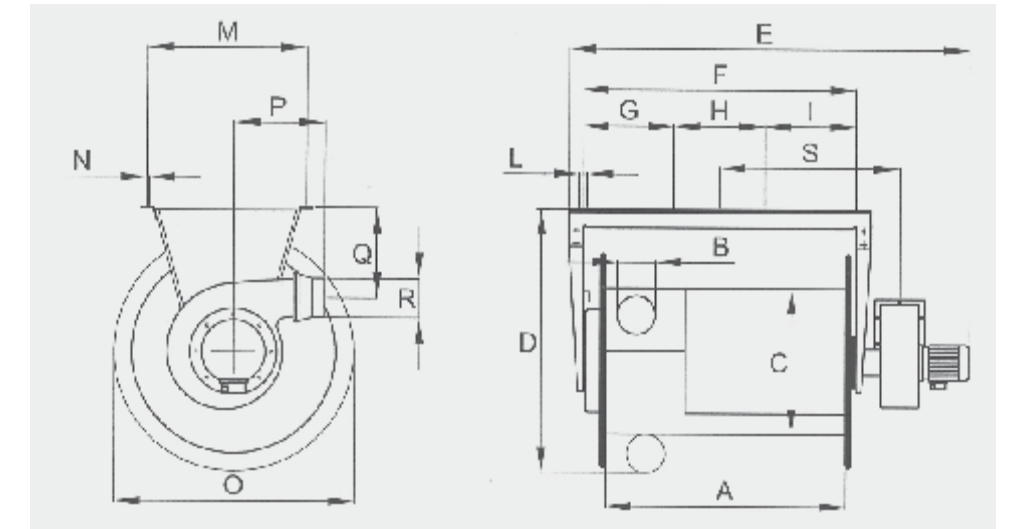
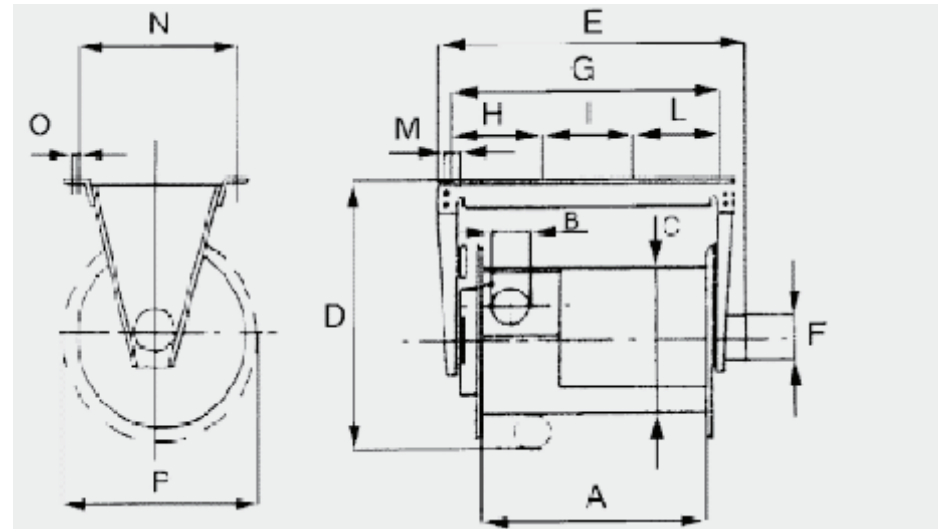
SPRING DRIVER HOSE REEL WITH FAN SUITABLE FOR GAS EXTRACTION OF MEDIUM POWERED AND HIGH POWERED CARS.
ADAPTED FOR WALL OR CEILING INSTALLATION.

Differs from "APTC-C" model in the coupling with an "LAM" series electric exhauster. Thanks to its compact size, is ideal for use with cars and motorcycles workshops where autonomous workstations are needed. It is equipped with a locking mechanism to stop the hose at the desired height. It can be fitted on either the wall or the ceiling. Complete with flexible hose mod. T-GAS, adjustable safety stop ATS, nozzle BNT, hose-clamp and with rubber covers. Suitable for centralized extraction system. On request, could be supplied with automatic exhauster starting device (SYSTEM-CTRL).



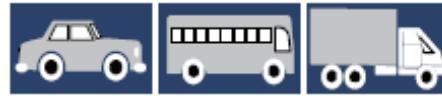
Mod	A (mm)	B Ø (mm)	C Ø (mm)	D (mm)	E (mm)	F Ø (mm)	G (mm)	H (mm)	I (mm)	L (mm)	M Ø (mm)	Kg
APT 75/7	600	75	350	600	709	120	639	40	246	10	540	43
APT 75/10	600	75	350	600	709	120	639	40	246	10	540	46

Mod	A (mm)	B Ø (mm)	C Ø (mm)	D (mm)	E (mm)	F Ø (mm)	G (mm)	H (mm)	I (mm)	L Ø (mm)	M Ø (mm)	N (mm)	O Ø (mm)	P (mm)	Kg	HP
APVT 75/7	600	75	350	600	1110	639	40	246	10	540	273	235	150	495	55	0,5
APVT 75/10	600	75	350	600	1110	639	40	246	10	540	273	235	150	495	57	0,5



Mod	A (mm)	B Ø (mm)	C Ø (mm)	D (mm)	E (mm)	F Ø (mm)	G (mm)	H (mm)	I (mm)	L Ø (mm)	M Ø (mm)	N (mm)	O Ø (mm)	P (mm)	Q (mm)	R Ø (mm)	S (mm)	Kg
APTC -75/13	850	75	350	631	1370	914	305	304	305	30	307	12	540	280	285	150	625	50
APTC -100/7	850	100	350	676	1370	914	305	304	305	30	311	12	580	280	285	150	625	50
APTC -100/10	850	100	350	676	1370	914	305	304	305	30	311	12	580	280	285	150	625	63

Mod	A (mm)	B Ø (mm)	C Ø (mm)	D (mm)	E (mm)	F Ø (mm)	G (mm)	H (mm)	I (mm)	L Ø (mm)	M Ø (mm)	N (mm)	O Ø (mm)	P (mm)	Q (mm)	R Ø (mm)	S (mm)	Kg
APVTC-75/13	850	75	350	631	1370	914	305	304	305	30	307	12	540	280	285	150	625	50
APVTC-100/7	850	100	350	676	1370	914	305	304	305	30	311	12	580	280	285	150	625	50
APVTC-100/10	850	100	350	676	1370	914	305	304	305	30	311	12	580	280	285	150	625	63



Mod. AM

HOSE REEL WITH MECHANICAL REWIND :

SPRING DRIVER HOSE REEL SUITABLE FOR GAS EXTRACTION OF HIGH-POWERED CARS AND INDUSTRIAL VEHICLES. ADAPTED FOR WALL OR CEILING INSTALLATION.

With flexible hose, lightweight but extremely sturdy, thanks to the high quality of the materials used. It is equipped with a locking mechanism to stop the hose at the desired height. It can be fitted to either the wall or the ceiling and, on request, equipped with an adjustable safety stop (ATS). Suitable for centralized extraction system.

On request it could be supplied with automatic exhauster starting device (SYSTEM-GO, SWB C1 o C2).



Mod. AM-MAXI

HOSE REEL WITH MECHANICAL REWIND:

KING SIZE SPRING DRIVER HOSE REEL SUITABLE FOR GAS EXTRACTION OF HIGH-POWERED CARS AND INDUSTRIAL VEHICLES.

ADAPTED FOR WALL OR CEILING INSTALLATION.

Lightweight but extremely sturdy, thanks to the high quality of the materials used. It is equipped with a locking mechanism to stop the hose at the desired height. It can be fitted to either the wall or the ceiling and, on request, equipped with an adjustable safety stop (ATS). Suitable for centralized extraction system. On request, it could be supplied with automatic exhauster starting device (SYSTEM-GO, SWB C1 o C2).



Mod. AMA

HOSE REEL WITH MECHANICAL REWIND:

SPRING DRIVER HOSE REEL WITH FAN SUITABLE FOR GAS EXTRACTION OF HIGH-POWERED CARS AND INDUSTRIAL VEHICLES.

ADAPTED FOR WALL OR CEILING INSTALLATION.

Complete of flexible hose. Differs from "AM" model in the coupling with an "LAM" series electric exhauster, It provides excellent extraction even with a flexible hose up to 13 metres long. It is particularly suitable for use in workshops where autonomous workstations are needed. On request, it could be supplied with automatic exhauster starting device (SYSTEM-CTRL).

Mod. AMA-MAXI

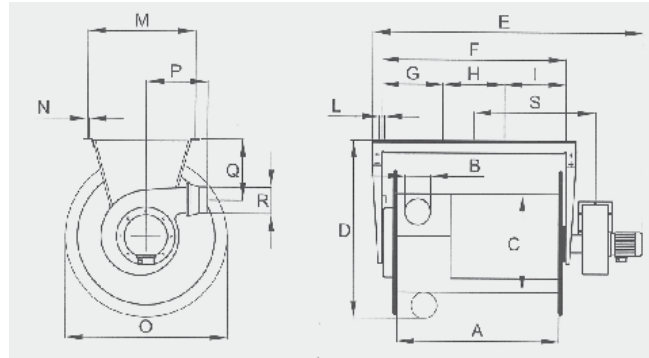
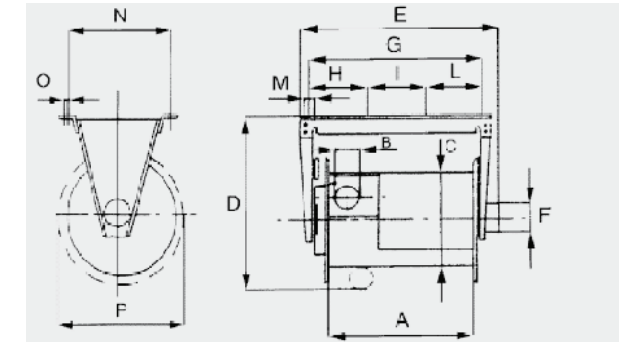
HOSE REEL WITH MECHANICAL REWIND:

SPRING DRIVER HOSE REEL WITH FAN SUITABLE FOR GAS EXTRACTION OF HIGH-POWERED CARS AND INDUSTRIAL VEHICLES.

ADAPTED FOR WALL OR CEILING INSTALLATION.

Differs from "AM-MAXI" model in the coupling with an "LAM" series electric exhauster. It provides excellent extraction even with a flexible hose up to 15 metres long. It is particularly suitable for use in workshops where autonomous workstations are needed. On request, it could be supplied with automatic exhauster starting device (SYSTEM-CTRL).

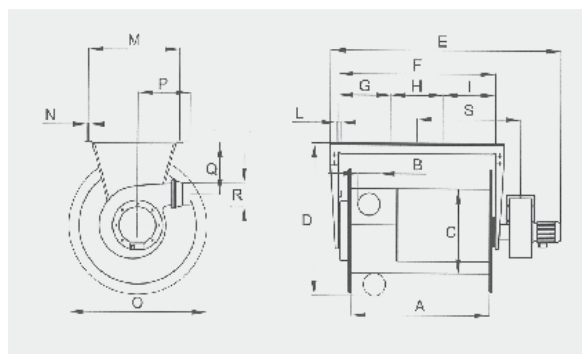
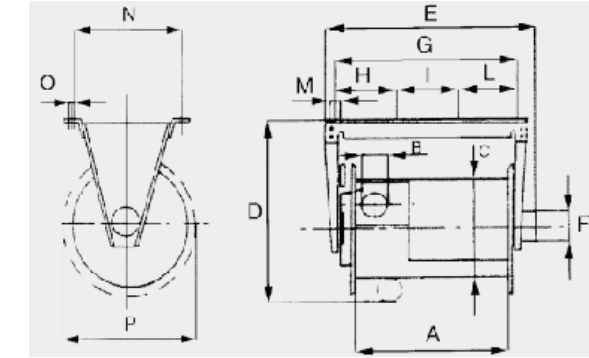
Mod	A (mm)	B Ø (mm)	C Ø (mm)	D (mm)	E (mm)	F Ø (mm)	G (mm)	H (mm)	I (mm)	L Ø (mm)	M Ø (mm)	N (mm)	O Ø (mm)	P Ø (mm)	Kg
AM-100/13	960	100	450	740	1170	150	1096	365	366	365	40	432	12	670	55
AM-125/7	720	125	450	795	930	150	856	285	286	285	40	444	12	730	45
AM-125/10	720	125	450	795	930	150	856	285	286	285	40	444	12	730	59
AM-125/13	960	125	450	795	1170	150	1096	365	366	365	40	444	12	730	61
AM-150/10	960	150	450	845	1170	150	1096	365	366	365	40	455	12	780	55



Mod	A (mm)	B Ø (mm)	C Ø (mm)	D (mm)	E (mm)	F Ø (mm)	G (mm)	H (mm)	I (mm)	L Ø (mm)	M Ø (mm)	N (mm)	O Ø (mm)	P (mm)	Q (mm)	R Ø (mm)	S (mm)	Kg	HP
AMA-100/13	960	100	450	740	1565	1096	365	366	365	40	432	12	670	280	300	150	725	67	0,5
AMA-125/7	720	125	450	795	1165	856	285	286	285	40	444	12	730	300	325	180	615	57	1
AMA-125/10	720	125	450	795	1360	856	285	286	285	40	444	12	730	300	325	180	615	79	1
AMA-125/13	960	125	450	795	1600	1096	365	366	365	40	444	12	730	300	325	180	735	81	1
AMA-150/10	960	150	450	845	1600	1096	365	366	365	40	455	12	780	300	350	180	735	75	1



Mod	A (mm)	B Ø (mm)	C Ø (mm)	D (mm)	E (mm)	F Ø (mm)	G (mm)	H (mm)	I (mm)	L (mm)	M (mm)	N (mm)	O (mm)	P Ø (mm)	Kg
AM-MAXI 125/15	960	125	625	980	1200	150	966	322	322	322	30	530	12	875	60
AM-MAXI 125/17	960	125	625	980	1200	150	966	322	322	322	30	530	12	875	62
AM-MAXI 150/13	960	150	625	1030	1200	150	966	322	322	322	30	530	12	925	60
AM-MAXI 180/10	960	180	625	1120	1200	150	966	322	322	322	30	542	12	985	60
AM-MAXI 200/10	960	200	625	1175	1200	150	966	322	322	322	30	570	12	1053	65



Mod	A (mm)	B Ø (mm)	C Ø (mm)	D (mm)	E (mm)	F (mm)	G (mm)	H (mm)	I (mm)	L (mm)	M (mm)	N (mm)	O Ø (mm)	P (mm)	Q (mm)	R Ø (mm)	S (mm)	Kg	HP
AM-MAXI 125/15	960	125	625	980	1540	966	322	322	322	30	530	12	875	300	355	180	661	80	1,5
AM-MAXI 125/17	960	125	625	980	1540	966	322	322	322	30	530	12	875	300	355	180	661	82	1,5
AM-MAXI 150/13	960	150	625	1030	1540	966	322	322	322	30	530	12	925	300	355	180	661	80	1,5
AM-MAXI 180/10	960	180	625	1120	1410	966	322	322	322	30	542	12	985	300	380	180	661	80	1,5
AM-MAXI 200/10	960	200	625	1139	1540	966	322	322	322	30	570	12	1053	300	380	180	661	83	1,5

Power-driven Rewinding Reels



Mod. AE/AER

ELECTRICAL-DRIVEN REWINDING REEL :

MOTOR DRIVEN HOSE REEL WITH PUSH BUTTON FOR THE ROLL-UP AND THE ROLL-DOWN OF THE FLEXIBLE HOSE FOR EXTRACTION. SUITABLE FOR WALL OR CEILING INSTALLATION. COMPLETE WITH ELECTRIC SAFETY STOP AND REMOTE START AND STOP OF THE CENTRALIZED FAN (CENTRALIZED AS OPTIONAL).

Operation by pushbutton panel (AE) or remote control (AER), both 24V as CE regulations. The electric geared motor is equipped with an adjustable electromechanical safety stop for both raising and lowering. It can be fitted on either the wall or the ceiling, also for eight of over 5 metres. Suitable for centralized extraction systems.

Mod. AE-MAXI/AER-MAXI

ELECTRICAL-DRIVEN REWINDING REEL:

MOTOR DRIVEN HOSE REEL WITH FAN AND WITH PUSH BUTTON FOR THE ROLL-UP AND THE ROLL-DOWN OF THE FLEXIBLE HOSE FOR EXTRACTION. SUITABLE FOR WALL OR CEILING INSTALLATION. COMPLETE WITH ELECTRIC SAFETY STOP AND REMOTE START AND STOP OF THE CENTRALIZED FAN (OPERATION BY PUSHBUTTON PANEL OR REMOTE CONTROL).

Operation by pushbutton panel (AE-MAXI) or remote control (AER-MAXI), both 24V as CE regulations. The electric geared motor is equipped with an adjustable electromechanical safety stop for both raising and lowering. It can be fitted on either the wall or the ceiling, also for eight of over 5 metres. Suitable for centralized extraction systems.



Mod. AEV/AERV

ELECTRICAL-DRIVEN REWINDING REEL:

MOTOR DRIVEN HOSE REEL WITH PUSH BUTTON FOR THE ROLL-UP AND THE ROLL-DOWN OF THE FLEXIBLE HOSE FOR EXTRACTION. SUITABLE FOR WALL OR CEILING INSTALLATION. COMPLETE WITH ELECTRIC SAFETY STOP AND REMOTE START AND STOP OF THE CENTRALIZED FAN (CENTRALIZED AS OPTIONAL).

Differs from "AE/AER" model in the coupling with an "LAM" series electric exhauster; this model provides excellent extraction even with a flexible hose up to 13 metres long. It is particularly suitable for use in workshop where autonomous workstations are needed. Exhausters switch-on/off is automatically regulated by the lowering/raising controls of the hose.



Mod. AEV/AERV-MAXI

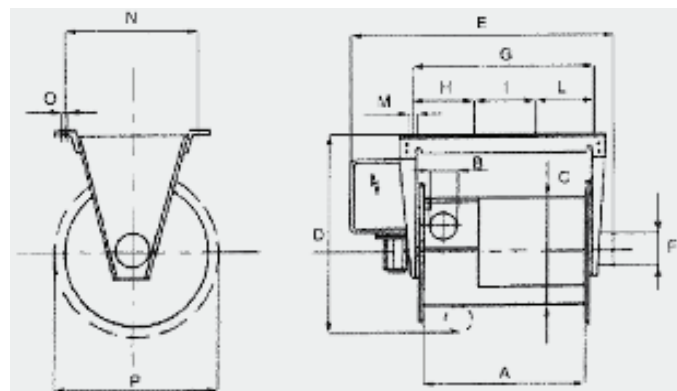
ELECTRICAL-DRIVEN REWINDING REEL

MOTOR DRIVEN HOSE REEL WITH FAN AND WITH PUSH BUTTON FOR THE ROLL-UP AND THE ROLL-DOWN OF THE FLEXIBLE HOSE FOR EXTRACTION. SUITABLE FOR WALL OR CEILING INSTALLATION. COMPLETE WITH ELECTRIC SAFETY STOP AND REMOTE START AND STOP OF THE CENTRALIZED FAN (OPERATION BY PUSHBUTTON PANEL OR REMOTE CONTROL).

Differs from "AE/AER-MAXI" model in the coupling with an "LAM" series electric exhauster. This model provides excellent extraction even with a flexible hose up to 17 metres long. It is particularly suitable for use in workshop where autonomous workstations are needed. Exhausters switch-on/off is automatically regulated by the lowering/raising controls of the hose.



Attention : All the power-driven reels are equipped with upwards-downwards electric safety stops. The power-driven reels coupled with exhausters are equipped with dual control electric panel for the automatic start up of the exhausters.

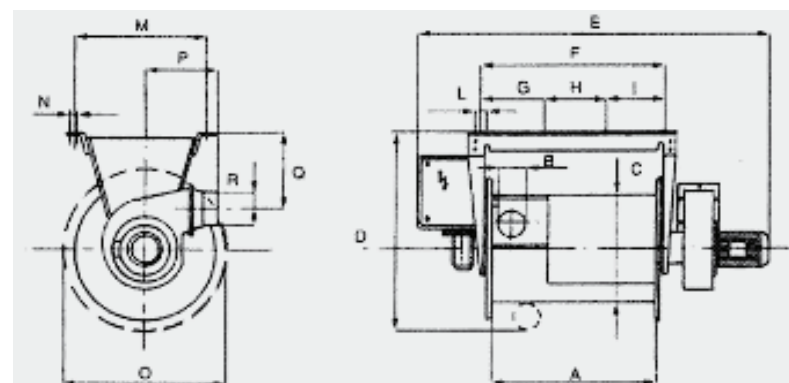


AE/AER	A (mm)	B Ø (mm)	C Ø (mm)	D (mm)	E (mm)	F Ø (mm)	G (mm)	H (mm)	I (mm)	L (mm)	M (mm)	N (mm)	O (mm)	P Ø (mm)	Kg
75/7	720	75	450	728	1184	150	856	285	286	285	40	432	12	650	56
75/10	720	75	450	728	1184	150	856	285	286	285	40	432	12	650	58
75/13	720	75	450	728	1184	150	856	285	286	285	40	432	12	650	61
100/7	720	100	450	740	1184	150	856	285	286	285	40	432	12	674	60
100/10	720	100	450	740	1184	150	856	285	286	285	40	432	12	674	63
100/13	960	100	450	740	1424	150	1096	365	366	365	40	432	12	674	66
125/7	720	125	450	766	1184	150	856	285	286	285	40	432	12	726	65
125/10	720	125	450	766	1184	150	856	285	286	285	40	432	12	726	68
125/13	960	125	450	766	1424	150	1096	365	366	365	40	444	12	726	71
125/17	1200	125	450	766	1628	150	1300	433	434	433	40	444	12	726	75
125/20	1500	125	450	766	1928	150	1600	533	534	533	40	444	12	726	78
150/10	960	150	450	790	1424	150	1096	365	366	365	40	455	12	774	73
150/15	1200	150	450	790	1628	150	1300	433	434	433	40	455	12	774	78
150/17	1500	150	450	790	1928	150	1600	533	534	533	40	455	12	774	80

AE/AER MAXI	A (mm)	B Ø (mm)	C Ø (mm)	D (mm)	E (mm)	F Ø (mm)	G (mm)	H (mm)	I (mm)	L (mm)	M (mm)	N (mm)	O (mm)	P Ø (mm)	Kg
125/15	960	125	625	986	1424	150	942	314	314	314	30	530	13	902	75
125/17	960	125	625	986	1424	150	942	314	314	314	30	530	13	902	77
150/13	960	150	625	1010	1424	150	942	314	314	314	30	530	13	950	79
180/10	960	180	625	1080	1424	150	942	314	314	314	30	542	13	1010	75
200/10	960	200	625	1100	1424	150	942	314	314	314	30	570	13	1050	78



AEV AERV MAXI	A (mm)	B Ø (mm)	C Ø (mm)	D (mm)	E (mm)	F (mm)	G (mm)	H (mm)	I (mm)	L (mm)	M (mm)	N (mm)	O Ø (mm)	P (mm)	Q (mm)	R Ø (mm)	S (mm)	Kg	HP
125/15	960	125	625	980	1820	942	314	314	314	30	530	13	902	300	355	180	661	75	1,5
125/17	960	125	625	980	1820	942	314	314	314	30	530	13	902	300	355	180	661	77	1,5
150/13	960	150	625	1030	1820	942	314	314	314	30	530	13	950	300	355	180	661	79	1,5
180/10	960	180	625	1120	1820	942	314	314	314	30	542	13	1010	300	380	180	661	75	1,5
200/10	960	200	625	1139	1820	942	314	314	314	30	570	13	1050	300	380	180	661	78	1,5



AEV AERV	A (mm)	B Ø (mm)	C Ø (mm)	D (mm)	E (mm)	F Ø (mm)	G (mm)	H (mm)	I (mm)	L (mm)	M (mm)	N (mm)	O (mm)	P Ø (mm)	Q (mm)	R Ø (mm)	Kg	m ² /h	S (mm)	HP
75/7	720	75	450	728	1580	856	285	286	285	40	432	12	650	280	275	150	56	350	605	0,5
75/10	720	75	450	728	1580	856	285	286	285	40	432	12	650	280	275	150	58	350	605	0,5
75/13	720	75	450	728	1580	856	285	286	285	40	432	12	650	280	275	150	61	350	605	0,5
100/7	720	100	450	740	1580	856	285	286	285	40	432	12	674	280	300	150	60	650	605	0,5
100/10	720	100	450	740	1580	856	285	286	285	40	432	12	674	280	300	150	63	650	605	0,5
100/13	960	100	450	740	1820	1096	365	366	365	40	432	12	674	280	300	150	66	650	725	0,5
125/7	720	125	450	766	1580	856	285	286	285	40	432	12	726	300	325	180	65	1000	615	1
125/10	720	125	450	766	1580	856	285	286	285	40	432	12	726	300	325	180	65	1000	615	1
125/13	960	125	450	766	1820	1096	365	366	365	40	444	12	726	300	325	180	71	1000	735	1
125/17	1200	125	450	766	2023	1300	433	434	433	40	444	12	726	300	325	180	75	1000	837	1,5
125/20	1500	125	450	766	2323	1600	533	534	533	40	444	12	726	300	325	180	78	1000	987	1,5
150/10	960	150	450	790	1820	1096	365	366	365	40	455	12	774	300	350	180	73	1400	735	1
150/15	1200	150	450	790	2023	1300	433	434	433	40	455	12	774	300	350	180	78	1400	837	1
150/17	1200	150	450	790	2323	1600	533	534	533	40	455	12	774	300	350	180	80	1400	987	1,5

Flexible Hose

T - GAS

Crush-proof nylon coil

CRUSH-PROOF NYLON COIL BLACK REINFORCED HOSE FOR MAX TEMPERATURE OF 200°C. SUITABLE FOR FITTING ON REELS AND FOR DUCT OR FLOOR-MOUNTED SYSTEMS. STRONGLY RECOMMENDED FOR ITS GREAT FLEXIBILITY, LIGHTNESS AND RESISTANCE.



T – SPECIAL 4

Aluminised glass fabric flexible hose

ALUMINISED GLASS FABRIC FLEXIBLE HOSE INCORPORATING A HIGH TENSILE STEEL HELIX SEWN EXTERNALLY. COLOUR: SILVER GREY WITH BLACK SCUFFSTRIP. OPERATING TEMPERATURE: 400°C. SUITABLE FOR FITTING ON REWINDING REELS AND ON STATIONARY SYSTEMS. NOT CRUSH-PROOF.



PAV

Rubber made crush-proof hose.

CRUSH-PROOF HOSES FOR FLOOR-LEVEL INSTALLATION WITH, MAXIMUM WORKING TEMPERATURE 150°C.



SNODOFLEX

Glass fabric hose coated with PVC strengthened

GLASS FABRIC HOSE COATED WITH PVC STRENGTHENED WITH HARMONIC STEEL CLOSE COIL, COVERED WITH PVC. OPERATING TEMPERATURE -20°C + 110°C. MAX ROLL LENGTH 10 MT.



T – SPECIAL 10

Aluminised glass fabric flexible hose

ALUMINISED GLASS FABRIC FLEXIBLE HOSE INCORPORATING A HIGH TENSILE STEEL HELIX SEWN EXTERNALLY. OPERATING TEMPERATURE: 40°C +1000°C. NOT CRUSH-PROOF. MAX LENGTH : 10 METERS.



ALLUFLEX

Seamed aluminium flexible hose Fire-proof.

SEAMED ALUMINIUM FLEXIBLE HOSE FIRE-PROOF. MAX TEMP. 300°C. 1 MT LONG EXTENSIBLE UP TO 3 MT.



Modello T-GAS

Model	Ø mm	L. m
75/2,5	75	2,5
75/5	75	5
75/7,5	75	7,5
75/10	75	10
75/13	75	13
75/15	75	15
75/20	75	20
75/40	75	40
100/2,5	100	2,5

Model	Ø mm	L. m
100/5	100	5
100/7,5	100	7,5
100/10	100	10
100/13	100	13
100/15	100	15
100/20	100	20
100/40	100	40
125/5	125	5

Model	Ø mm	L. m
125/7,5	125	7,5
125/13	125	13
125/15	125	15
125/17	125	17
125/20	125	20
125/40	125	40
150/5	150	5
150/7,5	150	7,5

Model	Ø mm	L. m
150/10	150	10
150/13	150	13
150/15	150	15
150/20	150	20
180/10	180	10
180/20	180	20
200/10	200	10
200/20	200	20



Modello T-SPECIAL 4



Model	Ø mm	L. m
100/2,5	100	2,5
100/5	100	5
100/7,5	100	7,5
100/10	100	10
125/2,5	125	2,5

Model	Ø mm	L. m
125/5	125	5
125/7,5	125	7,5
125/10	125	10
150/2,5	150	2,5
150/5	150	5

Model	Ø mm	L. m
150/7,5	150	7,5
150/10	150	10
180/2,5	180	2,5
180/5	180	5
180/7,5	180	7,5

Model	Ø mm	L. m
180/10	180	10
200/2,5	200	2,5
200/5	200	5
200/7,5	200	7,5
200/10	200	10

Modello T-SPECIAL 10

Model	Ø mm	L. m
100/2,5	100	2,5
100/5	100	5
100/7,5	100	7,5
100/10	100	10
125/2,5	125	2,5

Model	Ø mm	L. m
125/5	125	5
125/7,5	125	7,5
125/10	125	10
150/2,5	150	2,5
150/5	150	5

Model	Ø mm	L. m
150/7,5	150	7,5
150/10	150	10
180/2,5	180	2,5
180/5	180	5
180/7,5	180	7,5

Model	Ø mm	L. m
180/10	180	10
200/2,5	200	2,5
200/5	200	5
200/7,5	200	7,5
200/10	200	10



Modello PAV



Model	Ø mm	L. m
PAVIGAS-50/2,5	50	2,5
PAVIGAS-50/5	50	5
PAVIGAS-50/7,5	50	7,5
PAVIGAS-50/10	50	10

Model	Ø mm	L. m
PAVIGAS-75/2,5	75	2,5
PAVIGAS-75/5	75	5
PAVIGAS-75/7,5	75	7,5
PAVIGAS-75/10	75	10

Model	Ø mm	L. m
PAVIGAS-100/2,5	100	2,5
PAVIGAS-100/5	100	5
PAVIGAS-100/7,5	100	7,5
PAVIGAS-100/10	100	10

Model	Ø mm	L. m
PAVIGAS-125/2,5	125	2,5
PAVIGAS-125/5	125	5
PAVIGAS-125/7,5	125	7,5
PAVIGAS-125/10	125	10

Modello SNODOFLEX

Model	Ø mm	L. m
60	60	1
80	80	1
100	100	1
120	120	1
150	150	1

Model	Ø mm	L. m
160	160	1
180	180	1
200	200	1
220	220	1
250	250	1



Modello ALLUFLEX

Model	Ø mm	L. m
ALLUFLEX-100	100	3
ALLUFLEX-120	120	3
ALLUFLEX-150	150	3
ALLUFLEX-160	160	3
ALLUFLEX-180	180	3
ALLUFLEX-200	200	3



Mod. BN

Rubber nozzle with intake for C.O. (Ø 32 mm).



Model	for hose Ø mm	suction inlet Ø mm
BN-75/140	75	140
BN-75/200	75	200
BN-100/140	100	140
BN-100/200	100	200
BN-125/140	125	140
BN-125/200	125	200
BN-150/200	150	200
BN-180/200	180	200
BN-200/200	200	200

Mod. BNPG

Rubber nozzle with locking gripper and intake for C.O. (Ø 32 mm)



Model	for hose Ø mm	suction inlet Ø mm
BNPG-75/140	75	140
BNPG-100/140	100	140
BNPG-125/140	125	140
BNPG-100/200	100	200
BNPG-125/200	125	200
BNPG-150/200	150	200
BNPG-180/200	180	200
BNPG-200/200	200	200

Mod. BNT

Rubber nozzle with silicon remouvable cap an intake for C.O. (Ø 32 mm)



Model	for hose Ø mm	suction inlet Ø mm
BNT 75/140	75	140
BNT 100/140	100	140
BNT 125/140	125	140



Mod. BNA

Oval rubber nozzle for double exhausts with intake for C.O. (Ø 20 mm)



Model	for hose Ø mm	suction inlet Ø mm
BNA-75	75	165x88
BNA-100	100	165x88

Mod. BNPM

Rubber nozzle with manual locking gripper and intake for C.O. (Ø 32 mm)



Model	for hose Ø mm	suction inlet Ø mm
BN-75/140-PM	75	140
BN-100/140-PM	100	140
BN-125/140-PM	125	140
BN-100/200-PM	100	200
BN-125/200-PM	125	200
BN-150/200-PM	150	200
BN-180/200-PM	150	200
BN-200/200-PM	200	200

Mod. BSR

Stainless steel rectangular nozzle with closing flap and intake for C.O.



Model	for hose Ø mm	suction inlet Ø mm
BSR-75/160 *	75	160x90
BSR-75/200 *	75	200x110
BSR-100/200 *	100	200x110
BSR-125/200 *	125	200x110

Mod. BS

Stainless steel nozzle with closing flap and, on request, intake for C.O. standard mod. BSS



Model	for hose Ø mm	suction inlet Ø mm
BSS-75/100	75	100
BS-75/100 *	75	100
BS-100/100 *	100	100
BS-100/140 *	100	140
BS-100/160 *	100	160
BS-125/140 *	125	140
BS-125/180 *	125	180
BS-150/180 *	150	180
BS-180/180 *	180	180

Mod. BNA-P

Oval rubber nozzle for double exhausts with manual locking gripper and intake for C.O. (Ø 20 mm)



Model	for hose Ø mm	suction inlet Ø mm
BNA-75-P	75	165x88
BNA-100-P	100	165x88

Accessories Line

Sheet-metal hosepipe coupling, quick hose coupling zinc-plated for flexible hose (bayonet-joint), quick hose coupling PVC for flexible hose with spring-clutch, wall bearings for inactive hoses.



JOINT



TE



MC/S



SUP-75-ECO
SUP-75-100 SUP-75-150B

Mod. BNA-PI

Oval rubber nozzle for double exhausts with manual inner locking gripper. Intake for C.O. (Ø 20 mm).



Model	for hose Ø mm	suction inlet Ø mm
BNA-75-PI	75	165x88
BNA-100-PI	100	165x88

A bloccaggio

Mod. BCR

Rubber nozzle mod. BN with inclination device mounted on stand with vertical adjusting rod.



Model	for hose Ø mm	suction inlet Ø mm
BCR-75/140	75	160x90
BCR-75/200	75	200x110
BCR-100/200	100	200x110
BCR-125/200	125	200x110

Mod. BNPI

Oval rubber nozzle for double exhausts with manual locking inner gripper. Intake for C.O. (Ø 32 mm).



Model	for hose Ø mm	suction inlet Ø mm
BNPI-100/200	100	200
BNPI-125/200	125	200
BNPI-150/200	150	200

Mod. BIPG

Stainless steel nozzle with manual locking gripper for high temperature



Model	for hose Ø mm	suction inlet Ø mm
BIPG-100/200	100	200
BIPG-125/200	125	200
BIPG-150/200	150	200

Mod. BCRD

Trolley mounted double rubber nozzle with adjustable stand.



Model	for hose Ø mm	suction inlet Ø mm
BCRD-75	75	
BCRD-100	100	
BCRD-125	125	

Mod. BC-POWER

Oval stainless steel nozzle with rod on wheels for height and inclination adjustment.



Model	for hose Ø mm	suction inlet Ø mm
BC-POWER II/100	100	165x88
BC-POWER II	150	165x88

Mod. PIPE

Oval stainless steel nozzle with height and inclination adjustment rod.



Model	for hose Ø mm	suction inlet Ø mm
PIPE 2.5	100	350X250
PIPE 5	150	350X250

Mod. "Y"

Adaptor with double nozzle for twin pipes' vehicle. Equipped with 1,25 meter of flexible hose type T-GAS for each side, adaptor with double nozzle, diameter as indicated below.



Model	for hose Ø mm	suction inlet Ø mm
Y75-BNT-75/140	75	100
Y100-BNT-75/140	75	100
Y100-BNT-100/140	100	100
Y75-BNA-75	100	140
Y100-BNA-75	100	160
Y100-BNA-100	125	140
Y75-BNA-75P	100	140
Y100-BNA-75P	100	160
Y100-BNA-100P	125	140

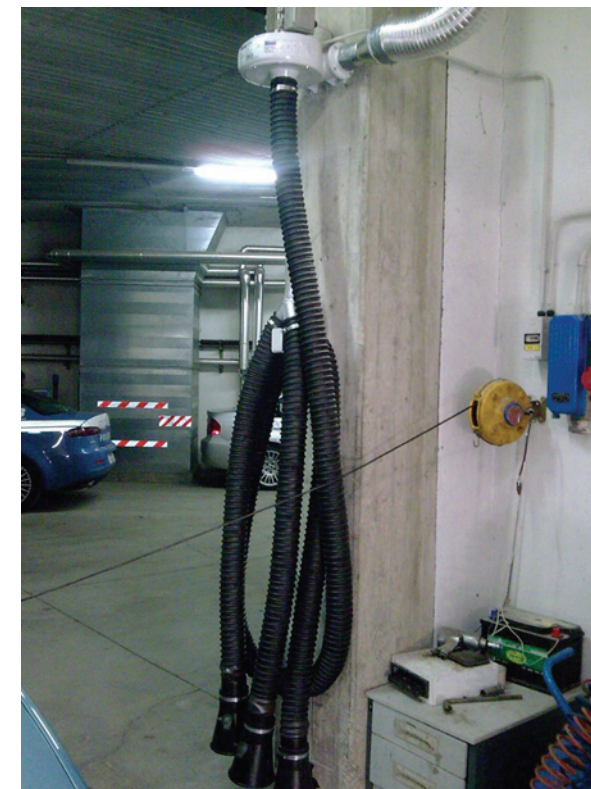


AVAILABLE ALSO WITH NOZZLE TYPE BNA – BNA PI - BNPg

Complete System



ETA UNO 75/5				
350 m ³ /h 206 c.f.m.	0,5 HP 0,35 Kw	5 mt 16,5 ft	75 mm 3"	BNT-75/140
ETA UNO 75/7.5				
350 m ³ /h 206 c.f.m.	0,5 HP 0,35 Kw	7,5 mt 25 ft	75 mm 3"	BNT-75/140
ETA UNO 75/10				
350 m ³ /h 206 c.f.m.	0,5 HP 0,35 Kw	10 mt 32 ft	75 mm 3"	BNT-75/140
ETA DUE 75/5				
350 m ³ /h 206 c.f.m.	0,5 HP-0,35 Kw 1phase	5 mt 16,5 ft	75 mm 3"	BNT-75/140
ETA DUE 75/7.5				
350 m ³ /h 206 c.f.m.	0,5 HP-0,35 Kw 1phase	7,5 mt 25 ft	75 mm 3"	BNT-75/140
ETA DUE 75/10				
350 m ³ /h 206 c.f.m.	0,5 HP-0,35 Kw 1phase	10 mt 32 ft	75 mm 3"	BNT-75/140



Mod. ETA ONE

FIXED WALL-MOUNTED EXTRACTION SYSTEM FOR GAS CONTROL TECHNOLOGY FOR SMALL AND MEDIUM SIZE VEHICLES.

Designed for use in small and medium-sized workshops, the ETA ONE is extremely compact and easy to install. Complete of an "ASP" aluminium electric exhauster, n° 1 crushproof flexible hose "T-GAS" L: 5 meters Ø 75, n° 1 neoprene rubber nozzle and n. 1 wall bearing for hose storage.

Mod. ETA TWO

FIXED WALL-MOUNTED EXTRACTION SYSTEM FOR GAS CONTROL TECHNOLOGY FOR SMALL AND MEDIUM SIZE VEHICLES.

Designed for use in small and medium-sized workshops, the ETA TWO is extremely compact and easy to install. Complete of an "ASP" aluminium electric exhauster, n. 2 crushproof flexible hoses "T-GAS" L: 5 mt Ø 75, n. 2 neoprene rubber nozzles and n. 2 wall bearings for hose storage.

Mod. COVER 6 GAS

FIXED WALL MOUNTED FOR EXTRACTION SYSTEM FOR GAS CONTROL TECHNOLOGY FOR SMALL AND MEDIUM SIZE VEHICLES.

Exhaust extraction kit for cars and motor-cycles suitable for workshops of small and middling size. 6 meter long, self-bearing, articulated extraction flag (working area: 12 meters), made of epoxy enameled steel. Strong and easy to install. It is supplied with:

- Exhauster model ASP 0.75 (COVER-6-GAS),
- Exhauster model ASP 1 (COVER-6-GAS-100),
- 1 meter long Ø 100 connecting flexible hose,
- 5 meter long Ø 75 extraction flexible hose (COVER-6-GAS),
- 5 meter long Ø 100 extraction flexible hose (COVER-6-GAS-100),
- One rubber nozzle with extractable cap
- One wall mounting for hose storage.



Mod. POWER II

THE ASPIRATION KIT FOR CAR EXHAUST ANALYSIS TESTS

The aspiration kit POWER II gives a simple though effective solution for the extractions of car exhaust fumes. Conceived for power tests, it is also perfect for car exhaust analysis tests. Easy to install, the POWER II is supplied complete with:

- “LAM” series sparkproof electric exhauster with high air flow rate and medium head.
- “T-GAS” – “T-SPECIAL” series flexible hose
- “CB” series rectangular stainless steel nozzle with adjustment bar.

OPTIONAL:

- Rolley mounted square nozzle dim. 600x600 mm for hoses Ø 200 with adjustment rods.



POWER II

100 mm 4"	5 mt 16,4ft	200° C 392° F	ECO	1 HP 0,75 Kw	650 m³/h 382 c.f.m.
150 mm 6"	5 mt 16,4ft	200° C 392° F	PRO	1,5 HP 1,1 Kw	1400 m³/h 823 c.f.m.
150 mm 6"	5 mt 16,4ft	400° C 752° F	FAP	1,5 HP 1,1 Kw	1400 m³/h 823 c.f.m.
200 mm 8"	5 mt 16,4ft	1000° C 1832° F	VP	3 HP 2,2 Kw	2500 m³/h 1470 c.f.m.



Mod. TTS-AK-1-C/T

COMPLETE EXHAUST EXTRACTION SYSTEM WITH ALUMINIUM TRACK ETB AND SLIDING CARRIAGES. FAN AND PREDISPOSITION FOR SLIDING FIXING POINT ARE INCLUDED.

Practical, easy and quick to install. It is the ideal solution for exhaust gas extraction near the car without the need for a fixed position or bulky additional hoses.

Complete with:

“LAM” series spark-proof 1 HP electric exhauster in steel sheet (mounted on the topside of the system), new extruded aluminium track “ETB”, 1 sliding carriage complete of 360° rotating flange in order to avoid hose twisting, 1 flexible hose mod. “T-GAS”, 1 rubber nozzle, coupling for hose suspension with nylon cable and 1 “ALLUFLEX” seamed aluminium flexible hose for conveying air to the exhauster.

La nuova struttura in estruso di alluminio, grazie alla sua rigidità, permette un minor numero di punti per lo staffaggio.



Articolo / Item	TTS AK 6/1	TTS AK 9/1	TTS AK 12/1	TTS AK 15/1	TTS AK 18/1	TTS AK 21/1
Lungh. canalina Track Length	6 mt	9 mt	12 mt	15 mt	18 mt	21 mt
Mod. C Caratteristiche / Features	1 HP L=7 mt - Ø 75	1 HP L=7 mt - Ø 75	1 HP L=7 mt - Ø 75	1 HP L=7 mt - Ø 75	1 HP L=7 mt - Ø 75	1 HP L=7 mt - Ø 75
Mod. T Caratteristiche / Features	1 HP L=7 mt - Ø 100	1 HP L=7 mt - Ø 100	1 HP L=7 mt - Ø 100	1 HP L=7 mt - Ø 100	1 HP L=7 mt - Ø 100	1 HP L=7 mt - Ø 100



Mod. TTS-AK-2-C/T

COMPLETE EXHAUST EXTRACTION SYSTEM WITH ALUMINIUM TRACK ETB AND SLIDING CARRIAGES. FAN AND PREDISPOSITION FOR SLIDING FIXING POINT ARE INCLUDED.

Practical, easy and quick to install. It is the ideal solution for exhaust gas extraction near the car without the need for a fixed position or bulky additional hoses.

Complete with:

“LAM” series spark-proof 1.5 HP electric exhauster in steel sheet (mounted on the topside of the system), new extruded aluminium track “ETB”, 2 sliding carriages complete of 360° rotating flange in order to avoid hose twisting, 2 flexible hoses mod. “T-GAS”, 2 rubber nozzles, coupling for hose suspension with nylon cable and 1 “ALLUFLEX” seamed aluminium flexible hose for conveying air to the exhauster.

La nuova struttura in estruso di alluminio, grazie alla sua rigidità, permette un minor numero di punti per lo staffaggio.



Articolo / Item	TTS AK 6/2	TTS AK 9/2	TTS AK 12/2	TTS AK 15/2	TTS AK 18/2	TTS AK 21/2
Lungh. canalina Track Length	6 mt	9 mt	12 mt	15 mt	18 mt	21 mt
Mod. C Caratteristiche / Features	1 HP L=7 mt - Ø 75	1 HP L=7 mt - Ø 75	1 HP L=7 mt - Ø 75	1 HP L=7 mt - Ø 75	1 HP L=7 mt - Ø 75	1 HP L=7 mt - Ø 75
Mod. T Caratteristiche / Features	1,5 HP L=7 mt - Ø 100	1,5 HP L=7 mt - Ø 100	1,5 HP L=7 mt - Ø 100	1,5 HP L=7 mt - Ø 100	1,5 HP L=7 mt - Ø 100	1,5 HP L=7 mt - Ø 100

Mod. TTS-AK-1-VP1/VP2

COMPLETE EXHAUST EXTRACTION SYSTEM WITH ALUMINIUM TRACK ETM AND SLIDING CARRIAGES. FAN AND PREDISPOSITION FOR SLIDING FIXING POINT ARE INCLUDED.

Practical, easy and quick to install. It is the ideal solution for exhaust gas extraction near the car without the need for a fixed position or bulky additional hoses.

Complete with:

“LAM” series spark-proof 1,5/2 HP electric exhauster in steel sheet (mounted on the topside of the system), new extruded aluminium track “ETM”, 1 sliding carriage complete of 360° rotating flange in order to avoid hose twisting, 1 flexible hose mod. “T-GAS”, 1 rubber nozzle, coupling for hose suspension with nylon cable and 1 “ALLUFLEX” seamed aluminium flexible hose for conveying air to the exhauster.

Mod. TTS-AK-2-VP1/VP2

COMPLETE EXHAUST EXTRACTION SYSTEM WITH ALUMINIUM TRACK ETM AND SLIDING CARRIAGES. FAN AND PREDISPOSITION FOR SLIDING FIXING POINT ARE INCLUDED.

Practical, easy and quick to install. It is the ideal solution for exhaust gas extraction near the car without the need for a fixed position or bulky additional hoses.

Complete with:

“LAM” series spark-proof 2/3 HP electric exhauster in steel sheet (mounted on the topside of the system new extruded aluminium track “ETM”, 2 sliding carriages complete of 360° rotating flange in order to avoid hose twisting, 2 flexible hoses mod. “T-GAS”, 2 rubber nozzles, coupling for hose suspension with nylon cable and 1 “ALLUFLEX” seamed aluminium flexible hose for conveying air to the exhauster.



Articolo / Item	TTS AK 9/2	TTS AK 12/2	TTS AK 15/2	TTS AK 18/2
Lungh. canalina Track Length	9 mt	12 mt	15 mt	18 mt
VP1 Caratteristiche / Features	1,5 HP L=7 mt - Ø 125	1,5 HP L=7 mt - Ø 125	1,5 HP L=7 mt - Ø 125	1,5 HP L=7 mt - Ø 125
VP2 Caratteristiche / Features	2 HP L=7 mt - Ø 150	2 HP L=7 mt - Ø 150	2 HP L=7 mt - Ø 150	2 HP L=7 mt - Ø 150



Articolo / Item	TTS AK 12/2	TTS AK 15/2	TTS AK 18/2	TTS AK 21/2	TTS AK 24/2	TTS AK 27/2	TTS AK 30/2
Lungh. canalina Track Length	12 mt	15 mt	18 mt	21 mt	24 mt	27 mt	30 mt
VP1 Caratteristiche / Features	2 HP L=7 mt - Ø 125	2 HP L=7 mt - Ø 125	2 HP L=7 mt - Ø 125	2 HP L=7 mt - Ø 125	2 HP L=7 mt - Ø 125	2 HP L=7 mt - Ø 125	2 HP L=7 mt - Ø 125
VP2 Caratteristiche / Features	3 HP L=7 mt - Ø 150	3 HP L=7 mt - Ø 150	3 HP L=7 mt - Ø 150	3 HP L=7 mt - Ø 150	3 HP L=7 mt - Ø 150	3 HP L=7 mt - Ø 150	3 HP L=7 mt - Ø 150



Mod. SYSTEM LINE

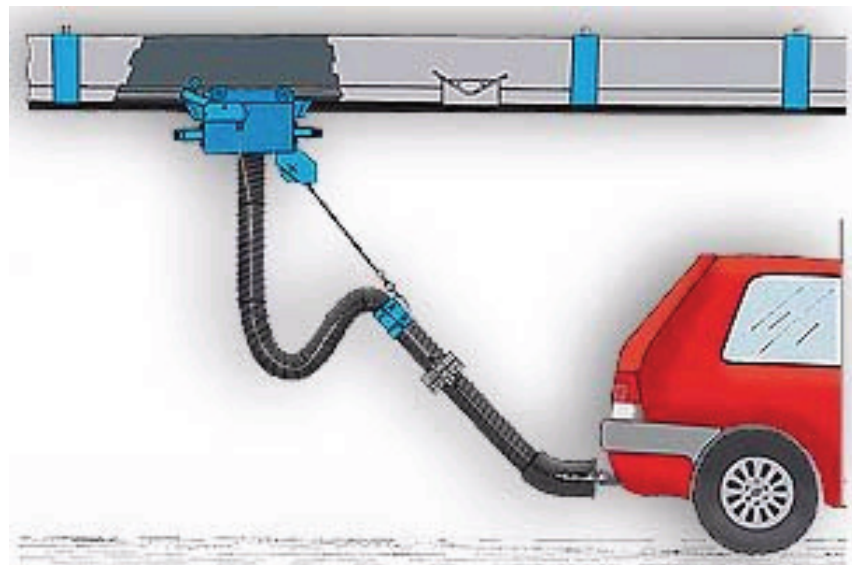
COMPLETE EXHAUST EXTRACTION SYSTEM WITH ALUMINIUM TRACK ETB AND SLIDING CARRIAGES. FAN AND PREDISPOSITION FOR SLIDING FIXING POINT ARE INCLUDED.

The extraction kit includes:

- Aluminium extraction rail 135x200 (mod. ETB, lenght: 9, 12 or 15 mt.
- Trolley with flexible hose Ø 100 mm – lenght 7.5 mt.
- Equalizer with counter-release
- Rubber nozzle with manual gripper
- Sparkproof cast aluminium electric exhauster high pressure mod. LAM 1 HP 1
- Alluflex hose to joint the line and the exhauster

Available in the following versions:

- Manual, after the nozzle is manually uncoupled the sliding trolley has to be accompanied to its parking place.
- Automatic uncoupling of the nozzle supplied with safety quick coupling system electric recovery of the trolley (optional).



N.B. Track brackets are not included, the chimney Ø 180 mm and the jointing line are to be studied on the spot.

Mod. SYSTEM LINE VP

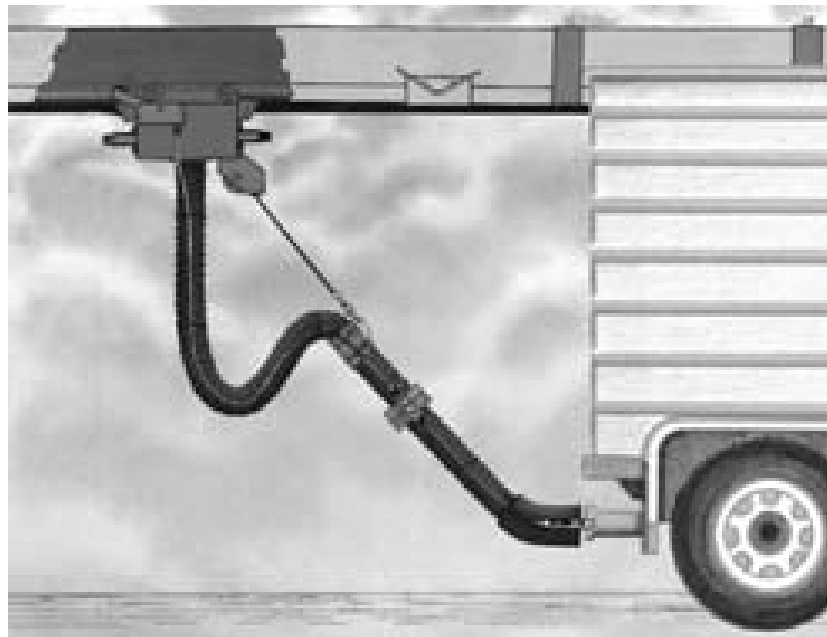
COMPLETE EXHAUST EXTRACTION SYSTEM WITH ALUMINIUM TRACK ETM AND SLIDING CARRIAGES. FAN AND PREDISPOSITION FOR SLIDING FIXING POINT ARE INCLUDED.

Complete heavy vehicles overhauling siliding furnished with:

- 2 HP electric exhauster,
- Aluminium Track size 180x200 mm (mod. ETM) L=15,18,21 mt.
- Sliding carriage with 7,5 mt- long Ø 150
- Equalizer with counter-release
- Rubber Nozzle and flexible hose type Alluflex for the connection system/exhauster

Available in the following versions:

- Manual disconnection of the nozzle and manual trolley return (kit)
- Automatic disconnection from the nozzle with quick joint and electric trolley return (optional).



N.B. Track brackets are not included, the chimney Ø 200 mm and the jointing line are to be studied on the spot.

Mod. LAM

STEEL PLATE ELECTRIC EXHAUSTER, COMPLETE WITH INLET AND OUTLET ROUND SECTION FLANGES.

Sparkproof according to specification. Complete with inlet and outlet round section flanges with lip for connecting collar. Standard versions: 220-380 V threephase; 50 Hz. For different voltages and frequencies, please contact our technical office.



Articolo Item	LAM 0,5	LAM 1	LAM 1,5	LAM 2	LAM 3	LAM 4	LAM 5,5	LAM 7,5	LAM 10	LAM 15	LAM 20
kW/HP	0,37/0,5	0,75/1	1,1/1,5	1,5/2	2,2/3	3/4	4,5/5	5,5/7,5	7,5/10	11/15	15/20
giri/rpm	2800	2800	2800	2800	2800	2800	2800	2800	2800	2800	2800
* dB	66	68	72	75	78	80	81	84	85	89	89
Entrata/Uscita Inlet/Outlet Ø [mm.]	150	180	180	200	200	250	250	300	350	380	400

ARTICOLO ITEM	LAM 0,5	LAM 1	LAM 1,5	LAM 2	LAM 3	LAM 4	LAM 5,5	LAM 7,5	LAM 10	LAM 15	LAM 20
300 Q-Pt*	90										
350 Q-Pt*	100										
400 Q-Pt*	105										
500 Q-Pt*	104										
600 Q-Pt*	100										
700 Q-Pt*	95	85									
800 Q-Pt*	85	95									
900 Q-Pt*	77	94									
1000 Q-Pt*		92	145								
1100 Q-Pt*		85	143								
1200 Q-Pt*		75	140								
1300 Q-Pt*		69	137								
1500 Q-Pt*		60	130								
1700 Q-Pt*		50	125	150							
1900 Q-Pt*			110	160	158	242	277				
2100 Q-Pt*			100	165	164	240	275				
2400 Q-Pt*				155	156	238	273				
2700 Q-Pt*				145	143	232	269	305	350		
3000 Q-Pt*				130	130	219	256	302	348		
3400 Q-Pt*					90	205	240	299	344		
3800 Q-Pt*					70	186	229	293	338	392	448
4100 Q-Pt*					58	175	215	284	330	389	445
4750 Q-Pt*						141	178	255	301	384	440
5400 Q-Pt*						112	148	234	282	377	432
6150 Q-Pt*						74	101	212	257	352	416
6850 Q-Pt*								180	223	328	382
7650 Q-Pt*								142	186	300	360
8500 Q-Pt*								97	127	271	328
9500 Q-Pt*										227	283
10800 Q-Pt*										180	236
12000 Q-Pt*										120	180

* Q (m³/H) - Pt (mm H₂O)



DIMENSIONI D'INGOMBRO OVERALL SIZE

Articolo Item	LAM 0,5	LAM 1	LAM 1,5	LAM 2	LAM 3	LAM 4	LAM 5,5	LAM 7,5	LAM 10	LAM 15	LAM 20
A	92	151	151	196	196	286	286	321	321	355	355
B	190	283	283	374	374	500	500	560	560	600	600
C	468	601	601	756	756	965	965	1080	1080	1180	1180
D	429	486	486	624	624	835	835	935	935	1052	1052
E	278	318	318	382	382	465	465	520	520	580	580
ø F	150	180	180	200	200	220	250	300	350	380	400
G	195	265	265	250	250	289	289	337	337	395	395
H	8,5	8,5	8,5	8,5	8,5	12	12	12	12	14	14
I	65	95	95	130	130	197	197	237	237	337	337
L	120	125	125	135	135	187	187	201	201	217	217
ø M	150	180	180	200	200	220	250	300	350	380	400
KG.	10	16	16	19	19	29	29	50	50	80	80

Mod. ASP

ALUMINUM ELECTRIC EXHAUSTER, COMPLETE WITH INLET AND OUTLET ROUND SECTION FLANGES.

Cast aluminium electric exhauster with high head and medium air flow rate. Sparkproof according to specification. Complete with inlet and outlet round section flanges
Standard versions: 220-380 V threephase; 50 Hz.

The use of "ASP" fans is recommended in case in which the diameter of the hose is less than 125 mm. and the total lenght of the line is more than 15÷20 metres. Please contact our technical office for further informations.



Articolo Item	ASP 0.35	ASP 0.5	ASP 0.75	ASP 1	ASP 1.5	ASP 2	ASP 3
kW/HP	0,25/0,35	0,37/0,5	0,55/0,75	0,75/1	1,1/1,5	1,5/2	2,2/3
giri/rpm	2840	2840	2840	2840	2840	2840	2840
* dB	72	72	74	78	78	78	78
Entrata/Uscita Inlet/Outlet Ø [mm.]	120/L	120/L	120/L	150/R	150/R	150/R	150/R

ARTICOLO ITEM	ASP 0,35	ASP 0,5	ASP 0,75	ASP 1	ASP 1,5	ASP 2	ASP 3
160 Q-Pr*	144	144					
200 Q-Pr*	142	142					
250 Q-Pr*	141	141					
300 Q-Pr*	139	139	166				
350 Q-Pr*	133	133	165				
400 Q-Pr*	132	132	162	218			
450 Q-Pr*	130	130	161	217	240	240	
500 Q-Pr*		124	160	216	238	238	
600 Q-Pr*		110	158	214	235	235	260
700 Q-Pr*		90	150	211	234	234	258
800 Q-Pr*			142	207	232	232	255
1000 Q-Pr*				194	230	230	253
1200 Q-Pr*				173		220	240
1400 Q-Pr*				164		200	228
1600 Q-Pr*				136		190	218
1700 Q-Pr*				116		180	215
1750 Q-Pr*						170	210
2000 Q-Pr*							195
2300 Q-Pr*							160
2400 Q-Pr*							140

* Q(m³/H) - Pt (mm H₂O)

DIMENSIONI D'INGOMBRO OVERALL SIZE

Articolo Item	ASP 0.35	ASP 0.5	ASP 0.75	ASP 1	ASP 1.5	ASP 2	ASP 3
A	160.5	160.5	194.5	201	201	201	201
B	240	240	300	330	330	330	330
C	413.5	413.5	496.5	555	555	555	555
D	475	475	498	573	573	573	573
E	282.5	282.5	274.5	324	324	324	324
F	120	120	120	150	150	150	150
G	120	120	120	150	150	150	150
H	347	380	393	459	459	484	484
I	121	121	127.5	161	161	161	161
M	90	90	90	165	165	165	165
N	140	140	140	190	190	190	190
O	11	11	11	15	15	15	15
KG.	10.5	11	14.5	22	23	27	30

Floor Traps in Tin-plated

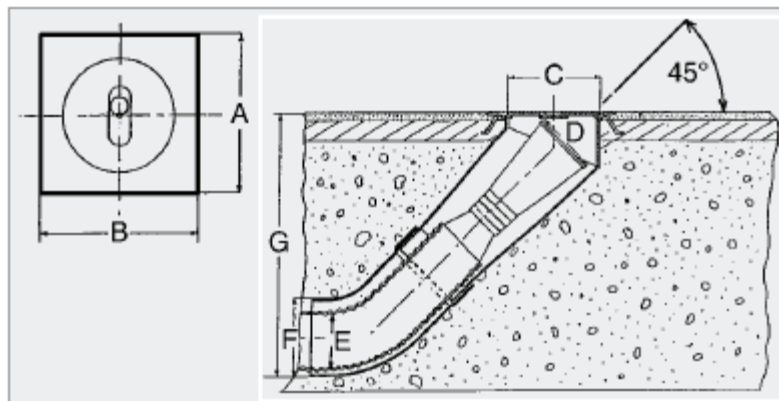
Mod. POZ

FLOOR TRAP IN TIN-PLATED SHEET STEEL EQUIPPED WITH ELBOW UNDER THE FLOOR FOR USE WITH INTERNAL HIDEAWAY HOSES.

Floor trap in tin-plated sheet steel (10 mm thickness) equipped with elbow under the floor for use with internal hideaway hoses.

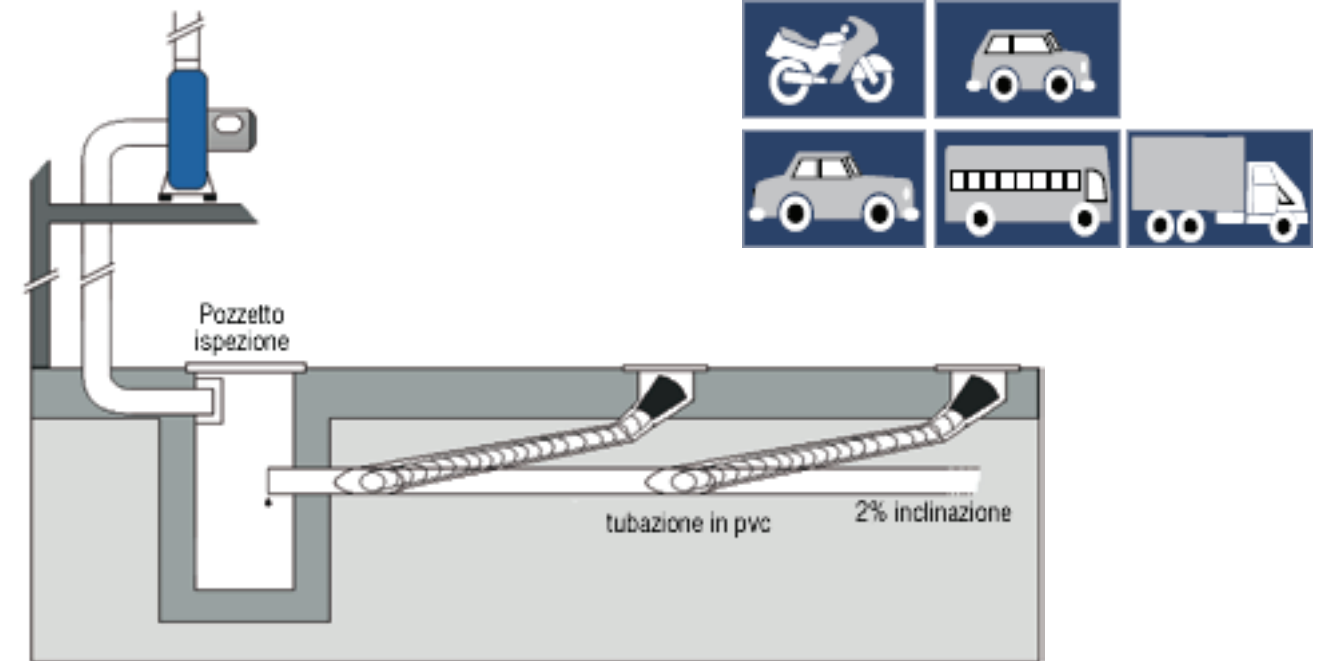
This under-floor elbow enables quick insertion of flexible hose and easy connection to the system piping in PVC.

For cars and commercial vehicles of medium power, we recommend the POZ 140 model, and for lorries and tractor-trailers the POZ 180.



Mod. POZ

Mod	A (x B) mm	Ø C mm	Ø D mm	Ø E mm	Ø F mm	G mm
140	350	250	140	75/100	140	582
180	350	250	200	125/150	200	582

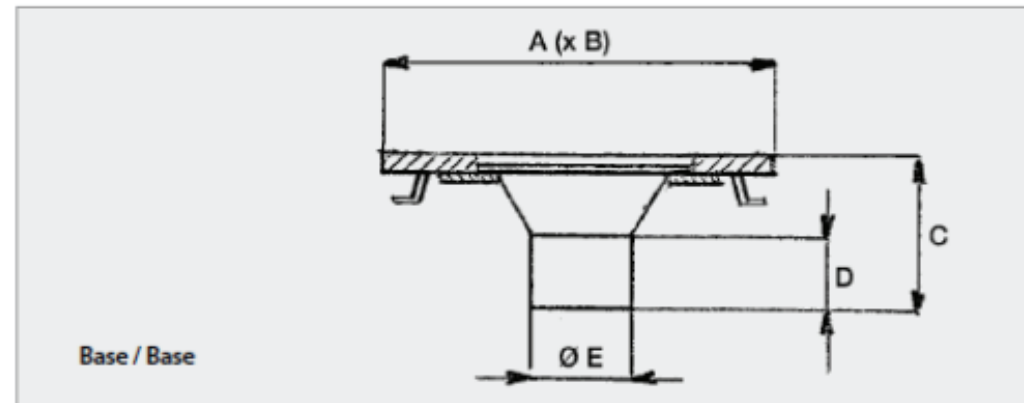
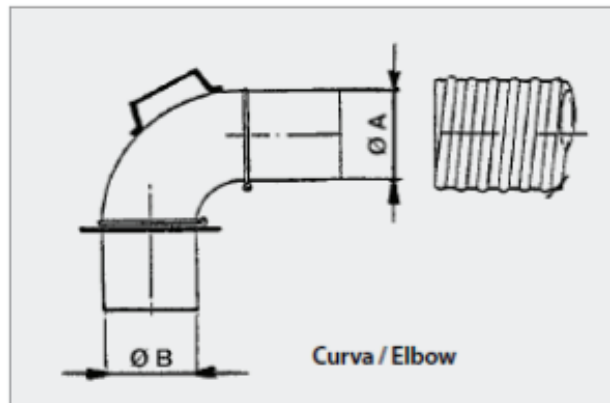
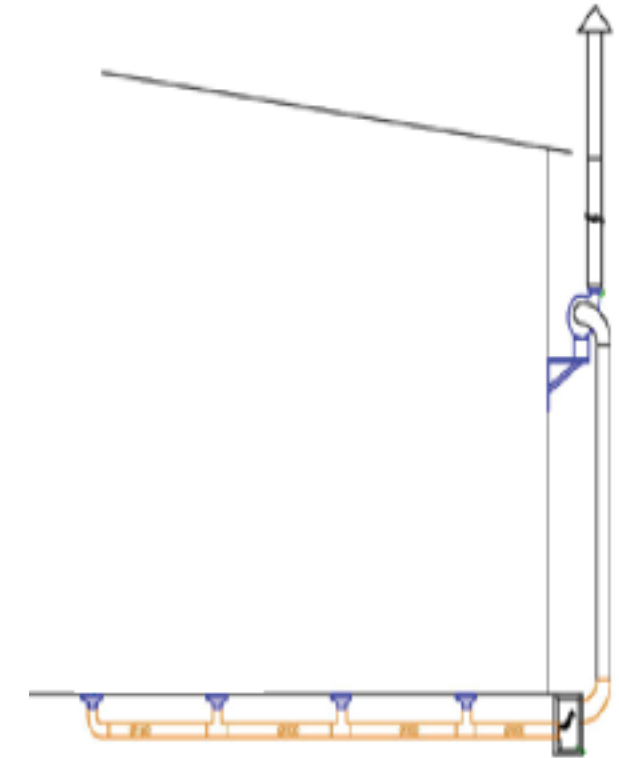
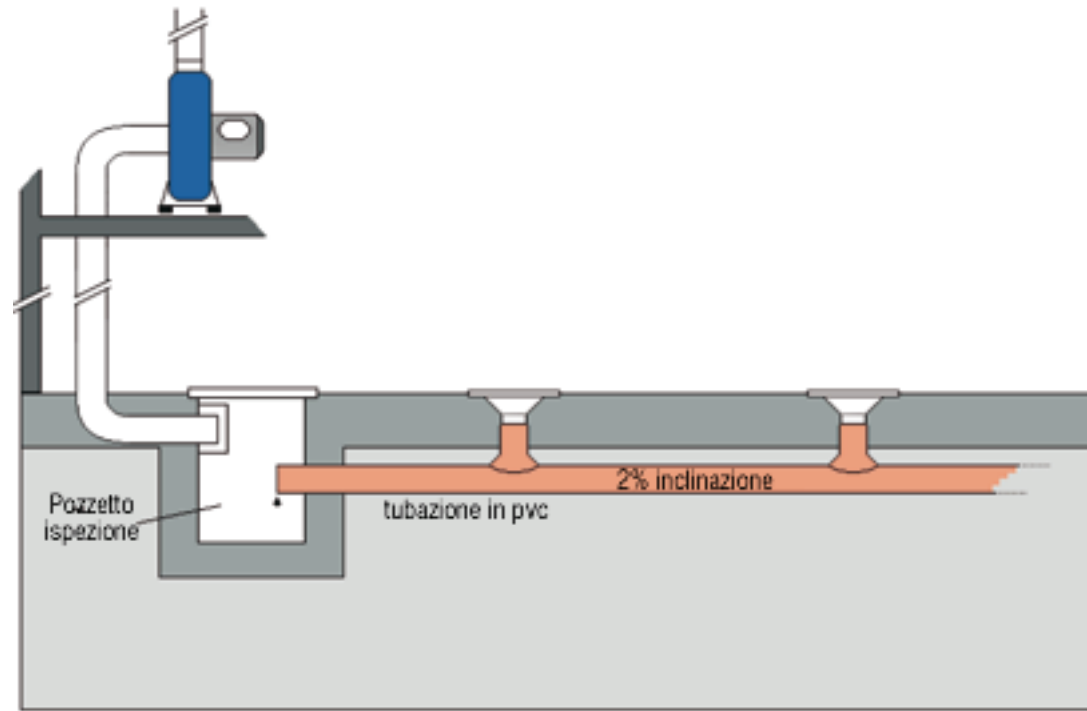


Mod. FL

FLOOR TRAP IN TIN-PLATED SHEET STEEL EQUIPPED WITH ELBOW CONNECTION FOR EXTERNAL HOSES ABOVE THE FLOOR.

Floor trap in tin-plated sheet steel equippe with elbow connection for external hoses above the floor. System very economical, as it is not necessary to have a hose and nozzle for each trap, so that a single elbow connection can be moved where needed.

For cars and commercial vehicles of medium power, we recommend the FL 75 or FL 100 model, and for lorries the FL 125 or mod. FL 150.



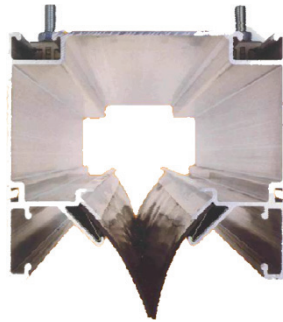
Mod	$\varnothing A$ mm	$\varnothing B$ mm
FL - 75 CURVA	75	99
FL - 100 CURVA	100	99
FL - 125 CURVA	125	119
FL - 150 CURVA	150	149

Mod	A (x B) mm	C mm	D mm	$\varnothing E$ mm
FL - 75/100 BASE	260	120	68	106
FL - 125 BASE	260	135	68	126
FL - 150 BASE	350	155	68	156

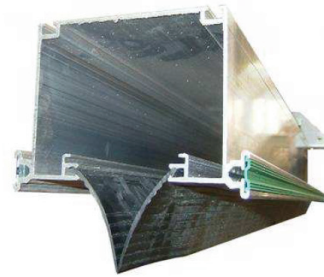
Sliding Tracks

Mod. ETB – ETM - ETL EXTRUDED ALUMINIUM TRACK

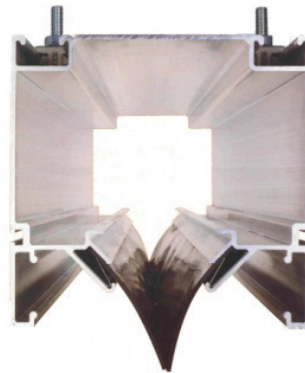
Modular aerial track completely made up in extruded aluminium. Thanks to its structural features, this track is light-weighted and at the same time weather-proof and with a sturdy contour. As it happens for the other track models, several carriages for hoses from Ø75 to Ø 200 and the reels model AEML and AETB can be installed in this system so as to offer the widest range of applications for the extraction of gases produced by cars, vans and lorries.



ETM



ETB



ETL

VERSIONS:

ETB

Extruded aluminium track – equivalent Ø 151 mm.
Max flow rate 1.400 m³/h.



ETM

Extruded aluminium track – equivalent Ø 170 mm
Max flow rate 1.800 m³/h.



ETL

Extruded aluminium track – equivalent Ø 210 mm
Max flow rate 2.750 m³/h.



Mod. AETB

SLIDING REELS FOR ALUMINIUM TRACK ETB

Mechanical rewinding reel equipped with flexible hose T-GAS, safety stop ATS, nozzle BNT, hose-clamps and hose-clamps covers FOR TRACKS MODEL ETB.



AVAILABLE ALSO POWER-DRIVEN REWINDING REELS VERSION

Mod. AEML

SLIDING REELS FOR ALUMINIUM TRACK ETM-ETL

Mechanical rewinding reel equipped with flexible hose T-GAS, safety stop ATS, nozzle BNT, hose-clamps and hose-clamps covers FOR TRACKS MODEL ETM – ETL.



AVAILABLE ALSO POWER-DRIVEN REWINDING REELS VERSION

Mod. CAT ETB

SLIDING CARRIAGES FOR TRACKS ETB

Sliding carriage for hose with connection for track ETB



SERIE BIL

Universal equalizer with counter-release suitable.

SERIE AN

Coupling for hose suspension on CAT carriage.

Mod. CAT ETM/ETL

SLIDING CARRIAGES FOR TRACKS ETM-ETL

Sliding carriage for hose with connection for the track ETM ETL

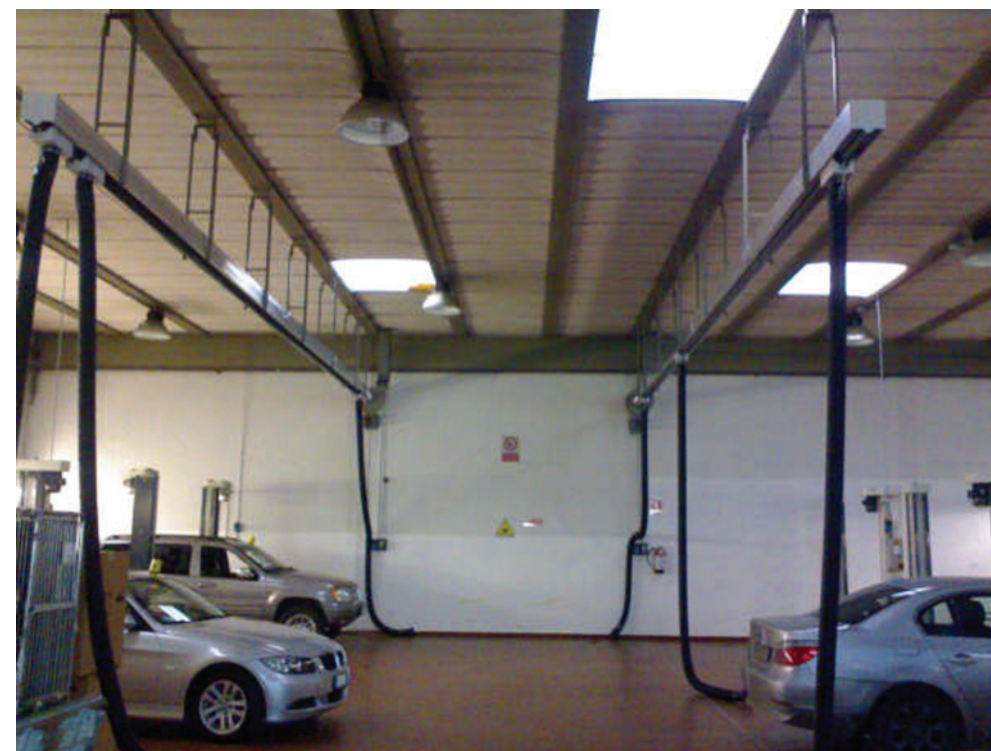


SERIE BIL

Universal equalizer with counter-release suitable.

SERIE AN

Coupling for hose suspension on CAT carriage.



ATTENTION: There available the same reels power-rewinding with push button / remote, they equipped with upwards/downwards electric adjustment safety stops. In order to supply electricity to the power-driven reels it necessary feeding line mod. LMF. For the translate right and left it is necessary the addition of the article TR with the rack assembled on the side of the track (only with type of track ETM-ETL)



CORAL
AUTOMOTIVE TECHNOLOGIES

CORAL AE SRL

Via G. De Chirico, 31 – 42100 Reggio Emilia (RE)

Tel.: +39.0522944039 - Fax: +39.0522944099

commercialeitalia@coralae.com

www.coralae.com

www.quellidellacoral.it